

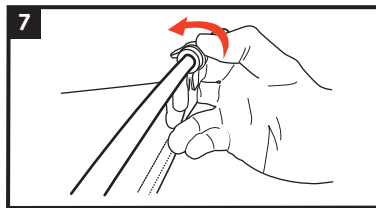
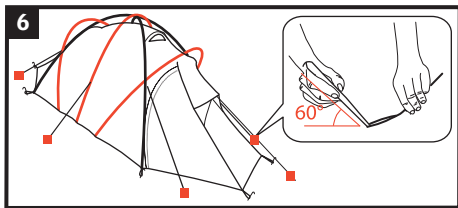
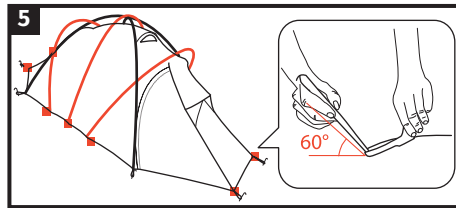
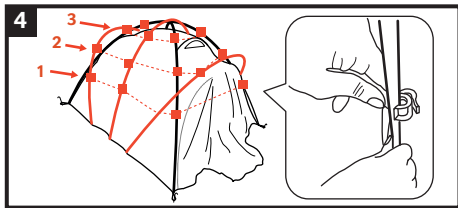
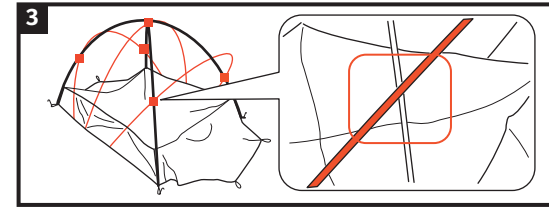
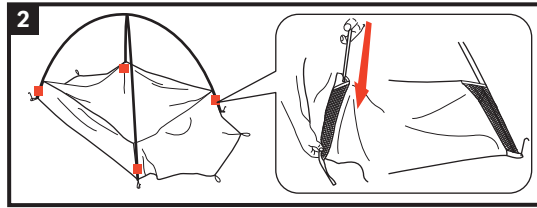
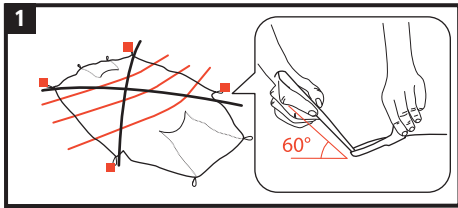
10mm

seam allowance

Power Sphaerio 3P

Trekking and Adventure Pro

Aufbauanleitung / pitching instruction



VAUDE Sport GmbH & Co. KG
Vaude Strasse 2, 88069 Tetttnang



Erfahre mehr über dein Zelt unter
<http://www.vaude.com/de-DE/Produkte/Zelte/>
For further informations about your tent please visit:
<http://www.vaude.com/en-GB/Products/Tents/>



Achtung! Erhöhte Materialermüdung durch dauerhafte UV- Einwirkung, wenn möglich immer einen Schattenplatz wählen! Schütze dein Zelt vor Alterung durch Sonne und Regen mit Nikwax Tent & Gear Solarproof.

Attention! Higher aging of material by permanent UV-impact, always prefer a sun protected pitching place if possible! Protect your tent from sun and rain damage with Nikwax Tent & Gear Solarproof.

220mm